

These drawings are the property of the Architect, Bignell Watkins Hasser Architects P.C. Unauthorised reproduction for any purpose is an infringement upon copyright laws. Violators will be subject to prosecution to fullest extent of the law. Written dimensions on these drawings shall have precedence over scale dimensions. Contractors shall verify and be responsible for all dimensions and conditions on the job and this office must be notified of any variation from the dimensions and conditions shown by these drawings.

ARCHITECT
 CONTACT:
 GREG GILBERT RA
 MICHAEL MATULA

CIVIL ENGINEER
 DELON HAMPTON AND ASSOCIATES
 8403 COLESVILLE ROAD, SUITE 600
 SILVER SPRING, MD 20910
 TEL: (301) 585-0100
 FAX: (301) 585-6486
 CONTACT: MARIO ASSEFA

STRUCTURAL ENGINEER
 ADEK ENGINEERS INC.
 57 MONROCKY BLVD SUITE H
 PATRICK EAST BUSINESS CENTER,
 FREDERICK, MD 21701
 TEL: (301) 662-4466
 FAX: (301) 662-7454
 CONTACT: SHAWN BENJAMINSON

MECHANICAL, ELECTRICAL & PLUMBING ENGINEER
 WEIGAND ASSOCIATES, INC.
 20270 GOLDENROD LANE, SUITE 280
 GERMANTOWN, MD 20876
 TEL: (301) 543-9000
 FAX: (301) 543-9061
 CONTACT: MONA MATAMI
 DAVE MRRICH

Revision Schedule

#	Date	Revision

DESIGN DEVELOPMENT

Client:
 PRINCE GEORGE'S COUNTY,
 MARYLAND

Location:
 12911 CHERRY TREE CROSSING,
 BRANDYWINE, MD 20613

Project:
 BRANDYWINE MAINTENANCE
 FACILITY

SITE PEDESTRIAN AND VEHICULAR CIRCULATION PLAN

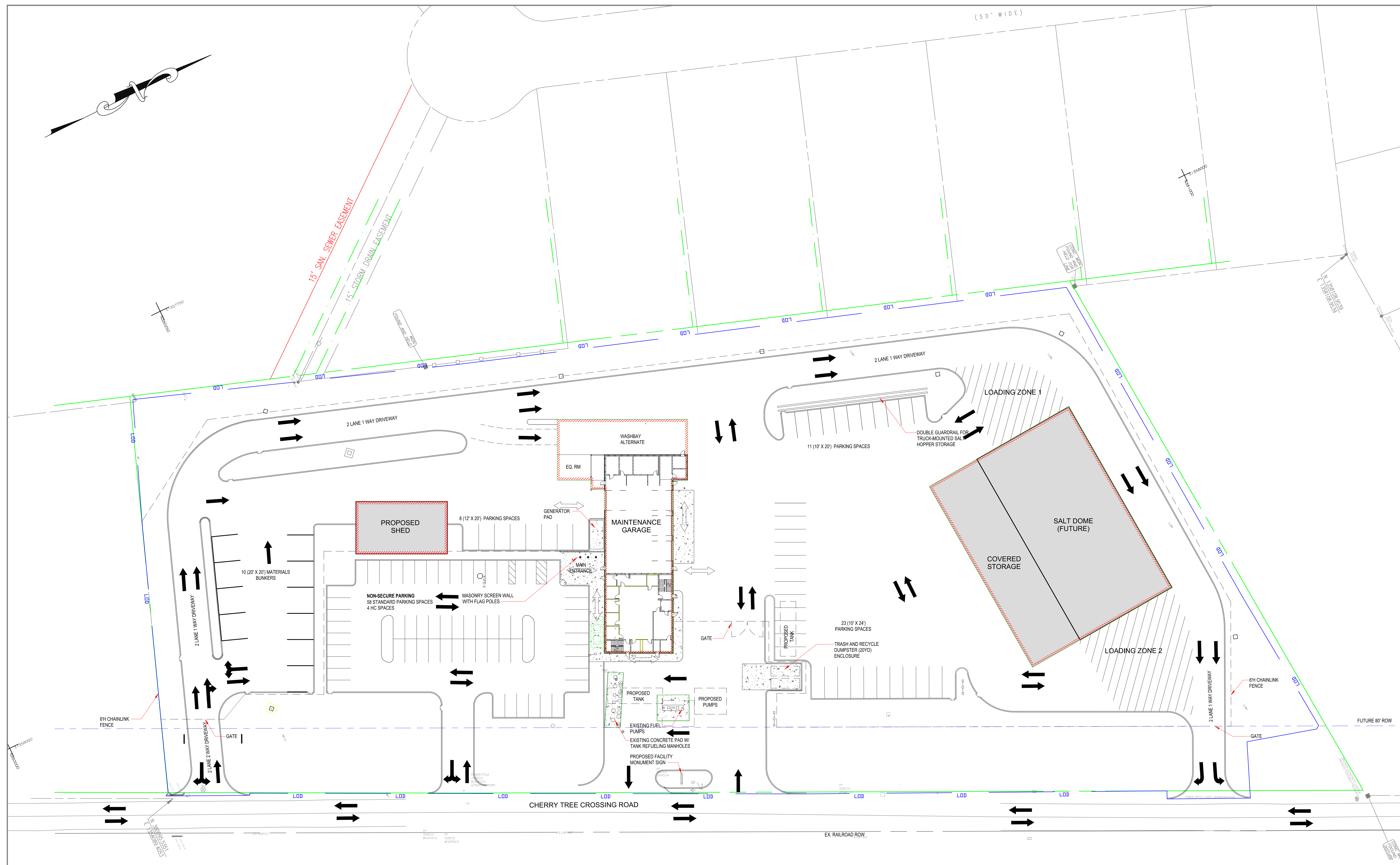
Drawn by:
 WD

Project No:
 17025

Date:
 6/15/18

Professional Certification
 I certify that these documents were prepared or approved by me, and that I am a duly licensed engineer under the laws of the State of Maryland.
 License No. 28234 Expiration Date 08-17-19

C 6.00



LEGEND:

➔ VEHICULAR CIRCULATION DIRECTION

↔ PEDESTRIAN CIRCULATION DIRECTION

▨ NEW BUILDING

SITE PARKING DATA:

TRUCK PARKING:	NUMBER	CAR PARKING:	NUMBER
SIZE		SIZE	
12'X20'	8	9'X18'	58
10'X20'	11	HC SPACE	4
10'X24'	23		

EXISTING SITE PARKING DATA:

IN EXISTING CONDITION, THE PARKING SPACES ARE NOT DEFINED. ALL VEHICLES ARE PARKED RANDOMLY ON AVAILABLE SPACES.

