



**SOLICITATION OF BIDS
FOR THE LEASING OF WATERFOWL BLIND SITES
ON THE PATUXENT RIVER**

Notice is hereby given that the M-NCPPC shall permit the right to establish a limited number of blind sites and stationary blinds for waterfowl hunting on M-NCPPC lands on the Patuxent River in Prince George's County. The fee for the permit will be determined by sealed bid. The permit will be awarded to the highest bidder. Individuals or groups may bid on any or all of the sites offered, but will only be eligible to permit one site per season. Only four (4) hunters will be allowed onsite at a given time.

- Site A - Cedarhaven (north of Eagle Harbor)
- Site B - Black Swamp Creek (at Carpenters Creek)
- Site C - Jug Bay (near Swan Point Creek)
- Site D - Back Channel (north of Rt. 4 at Wayson's Corner)
- Site E - Back Channel (north of Site D)
- Site F - Patuxent River (north of Site E, south of Spyglass Island)

The exact location of the waterfowl blind sites are subject to prior approval by the M-NCPPC. The permittee(s) must provide his/her own materials and labor to construct the blind. The permittee(s) can also hunt from a boat blind at the stake marking the designated site.

Bids must be submitted for all sites on attached bid sheet. Sealed bids identified by name, address, phone, and choice of site must be submitted by 12:30 P.M., Thursday, August 22, 2019 to:

**Waterfowl Blind Site Bid, M-NCPPC
Patuxent River Park
16000 Croom Airport Road
Upper Marlboro, MD 20772-8395
ATTN: Greg Kearns**

Bids will be opened at 1:00 P.M., Thursday, August 22, 2019 at the above mentioned address.

High bidders will be notified by Friday, August 23, 2018. The bidder or designee must be readily available on this date or before to accept or deny the bid. All reasonable efforts will be made to contact the highest bidder. **If calls are not returned within 48 hours, the blind site will be forfeited to the next high bidder.**



Solicitation of Bids For the Leasing of Waterfowl
Blind Sites on the Patuxent River

If you are interested in submitting a bid for the 2019-2020 season, we have listed last year's winning bids as a guideline.

2018-19 Season - Winning Bids

Bid Amount	Site	Location
\$ 753.13	A	Cedarhaven (north of Eagle Harbor)
\$ 1,608.00	B	Black Swamp (at Carpenters Creek)
\$ 3,250.00	C	Jug Bay (near Swan Point Creek)
\$ 3,601.00	D	Back Channel (north of Rt.4 at Wayson's Corner)
\$ 10,251.00	E	Back Channel (north of Site D)
\$ 1,750.00	F	Patuxent River (north of Site E, south of Spyglass Island)

A check payable to **M-NCPPC** covering the full amount of the bid must be returned to the Patuxent River Park office by 5:00 PM, Friday, August 30, 2019. **FAILURE TO COMPLY WILL VOID THE PERMIT. BLIND SITE WILL BE AWARDED TO THE NEXT HIGHEST BIDDER.**

Further information may be obtained by calling Greg Kearns at the Patuxent River Park, 301-627-6074.

MARYLAND-NATIONAL CAPITAL PARK & PLANNING COMMISSION

PATUXENT RIVER PARK

BLIND SITES

SITE A - Located approximately 500 yards south of where Kennedy Run empties into the Patuxent on Prince George's County side of the river. Just above Eagle Harbor. Good open water site. Generally accessible to all but the coldest weather. Good for geese and ducks. **NO ACCESS AVAILABLE FROM CEDAR HAVEN FISHING AREA. ACCESS IS AVAILABLE FROM HALLOWING POINT BOAT RAMP AT BENEDICT.**

SITE B - After entering the mouth of Black Swamp Creek from the main river channel, travel approximately 200 yards to first creek on left (Carpenter's Creek). Continue around the bend to the right and down a straight away (with trees on the left). Approximately 150 yards, the creek bends again to the left and the blind site is about 30 yards down from the point, on the left bank.

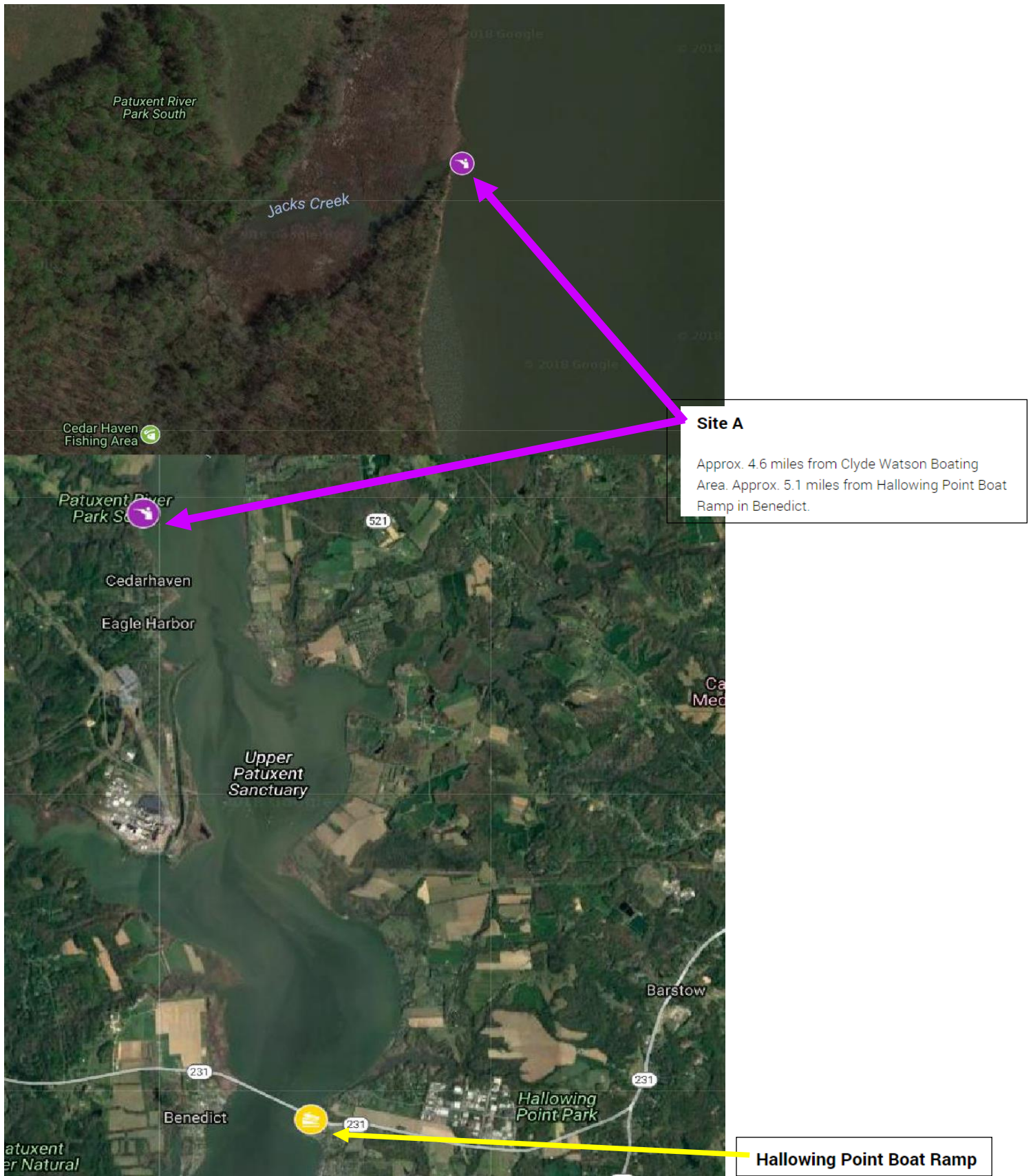
SITE C - Approximately 3/4 of a mile from Selby's Landing at Jug Bay on Main River channel on left side heading north upstream. Excellent site in shallow water. Good for ducks and geese. May be inaccessible at very low tides.

SITE D - Approximately 250 yards up from mouth of Back Channel Creek. Just beyond small stream on right side of Back Channel heading upstream. Very good site for ducks and some geese. Located on a large creek in a fresh water marsh. Excellent early season; may be frozen by late season.

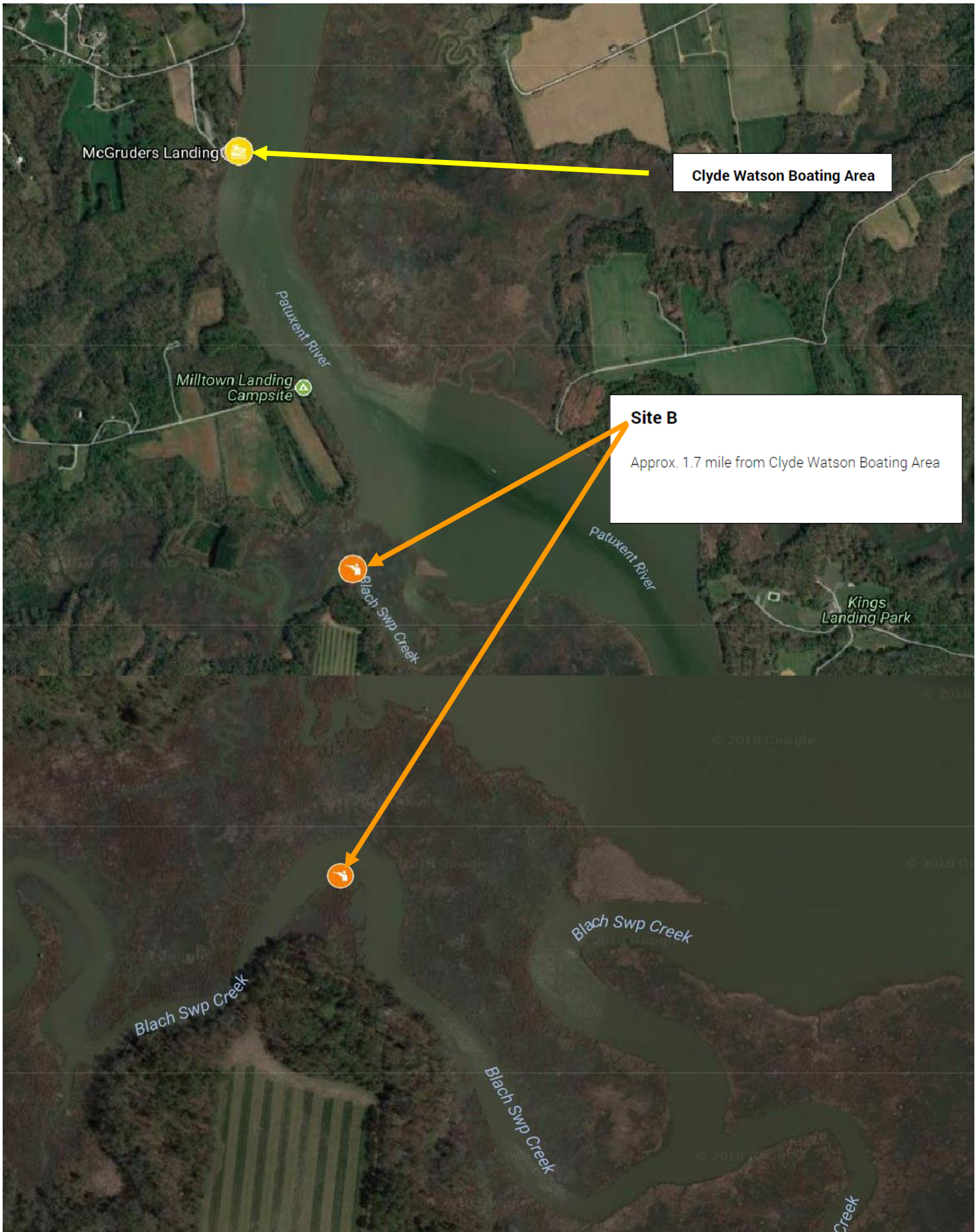
SITE E - Approximately 1/2 mile upstream from mouth of Back Channel Creek, 400 yards north of Blind "D", at mouth of smaller creek on right side of stream. Very good site for ducks and some geese. Located on a large creek in a fresh water marsh. Excellent early season; may be frozen by late season.

SITE F - Approximately 1 mile north from Back Channel Creek on left shore of river going upstream. 100 yards below the southern tip of Spyglass Island. Pass shooting for wood ducks and mallards.

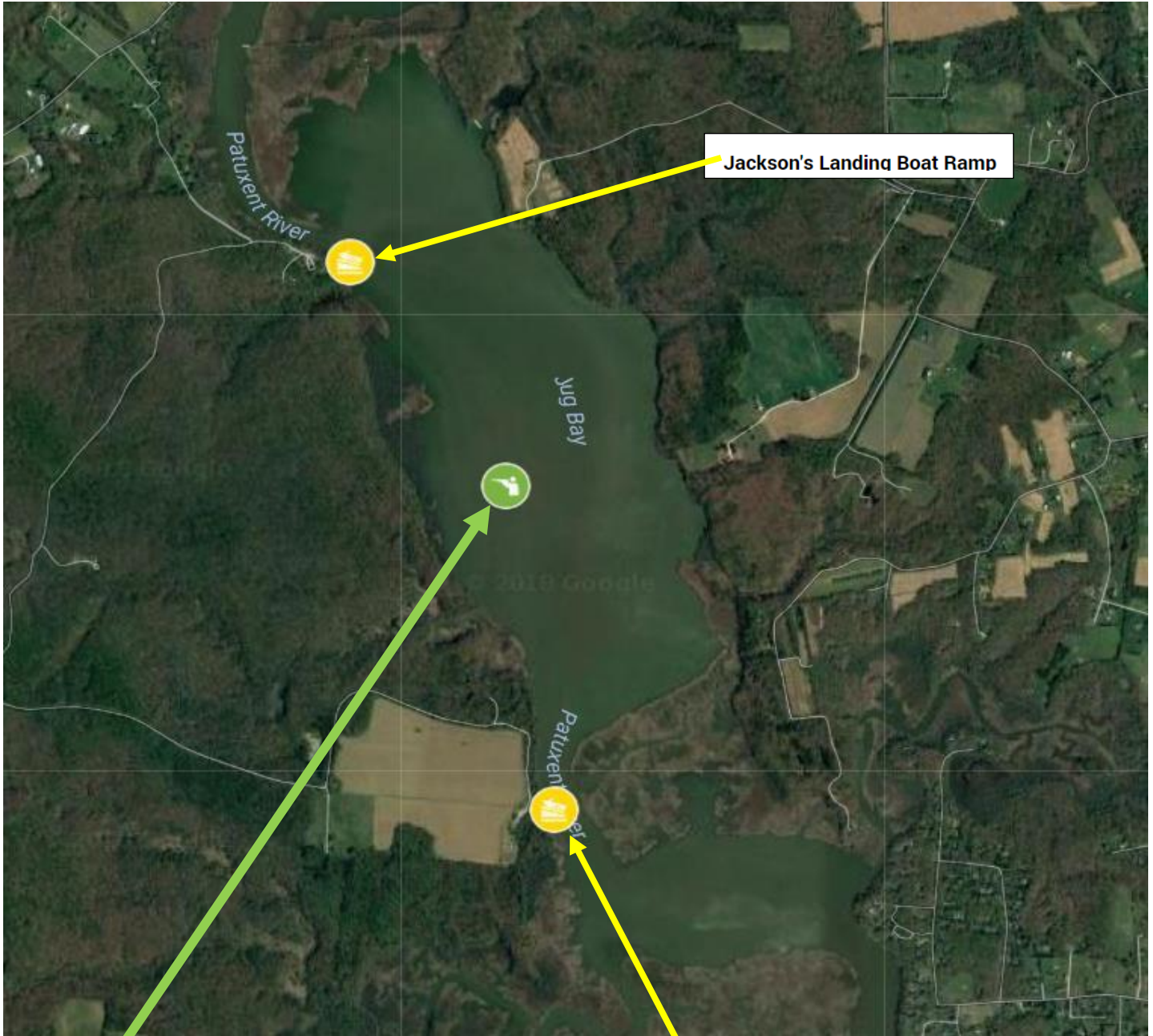
Solicitation of Bids For the Leasing of Waterfowl
Blind Sites on the Patuxent River



Solicitation of Bids For the Leasing of Waterfowl
Blind Sites on the Patuxent River



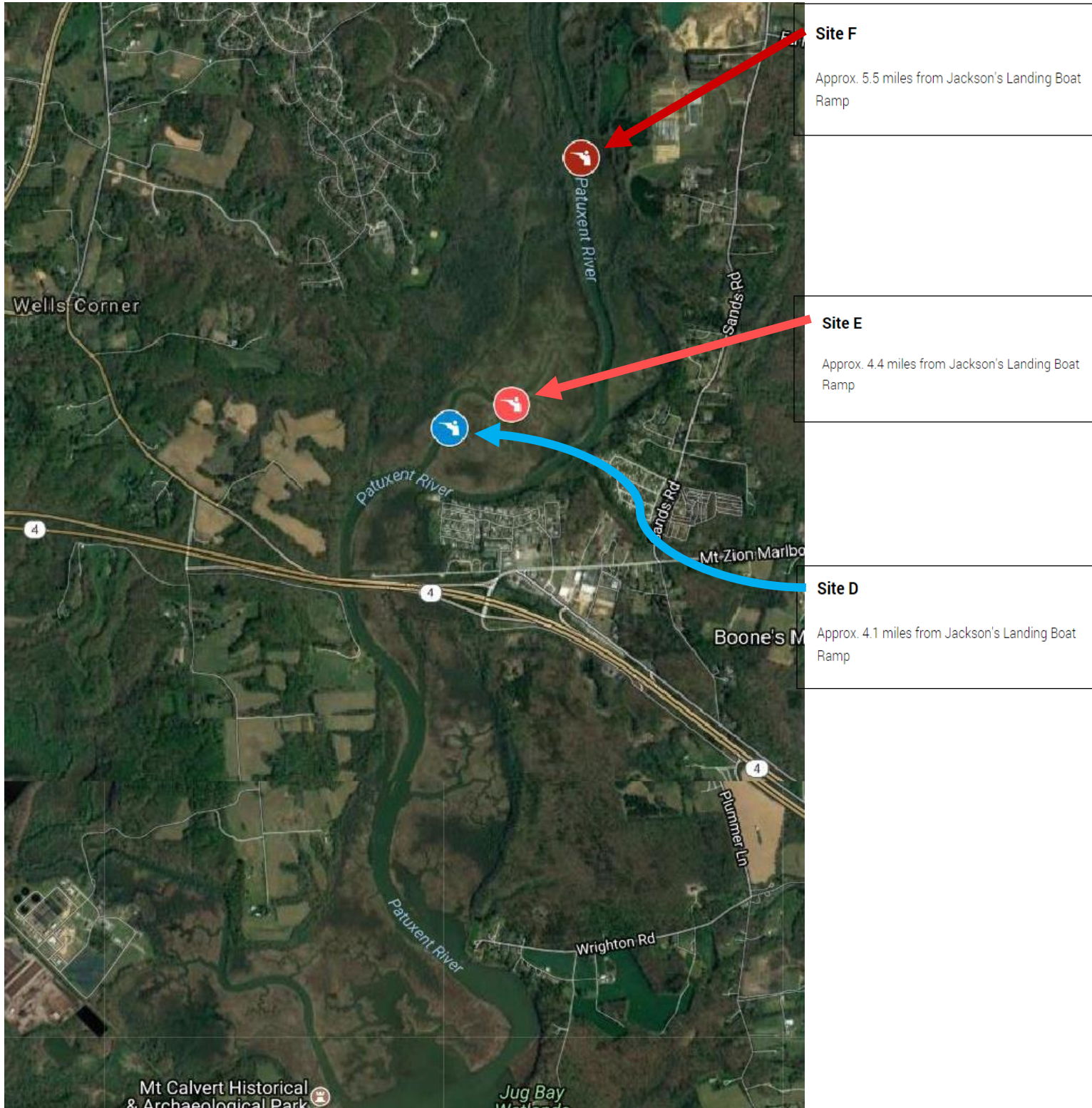
Solicitation of Bids For the Leasing of Waterfowl
Blind Sites on the Patuxent River



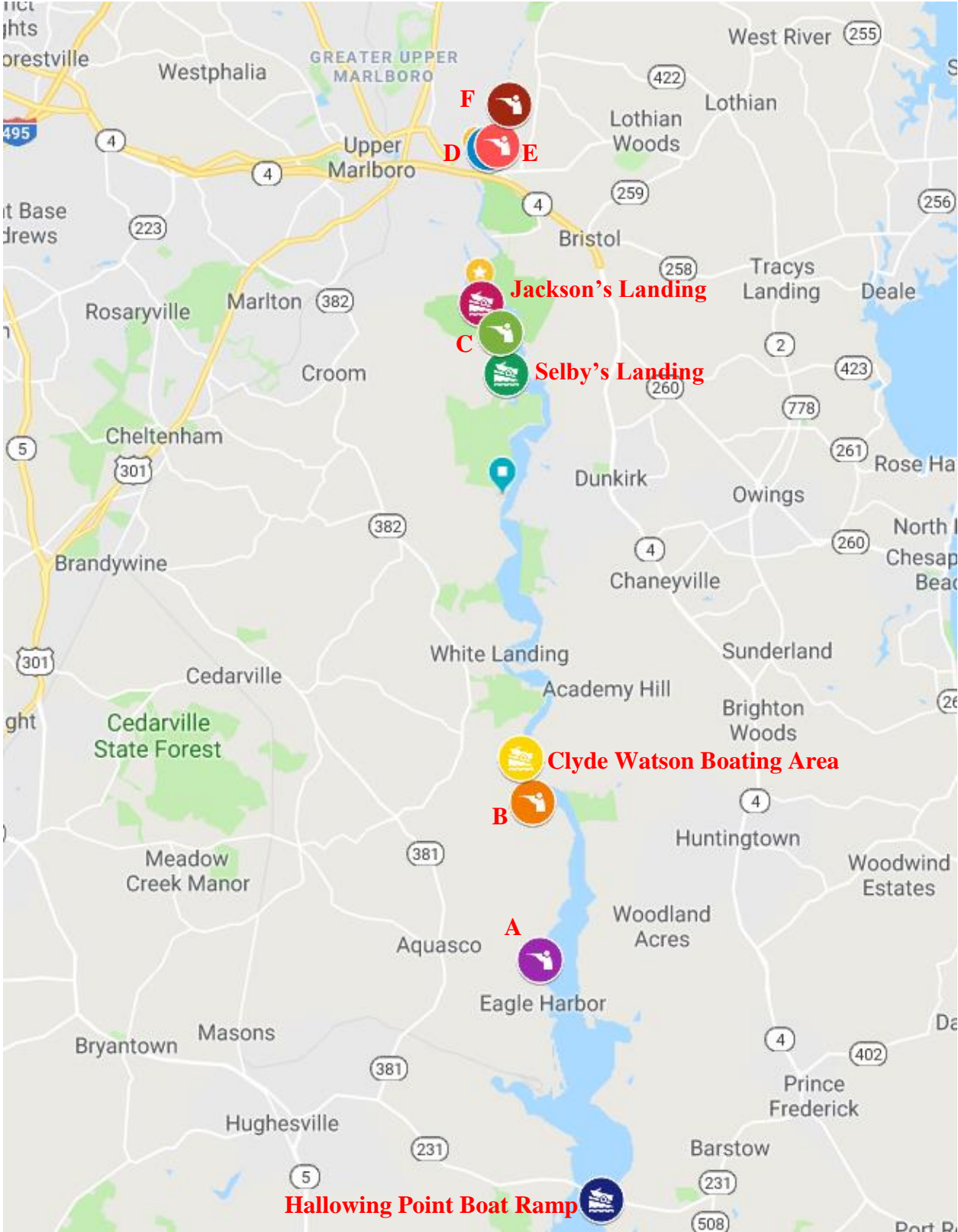
Site C
Approx. 0.85 mile from Selby's Landing Boat Ramp. Approx. 0.7 mile from Jackson's Landing Boat Ramp.

Selby's Landing Boat Ramp

Solicitation of Bids For the Leasing of Waterfowl
Blind Sites on the Patuxent River



Solicitation of Bids For the Leasing of Waterfowl
Blind Sites on the Patuxent River



Solicitation of Bids For the Leasing of Waterfowl
Blind Sites on the Patuxent River

The waterfowl listed below is representative of species that have been seen in the area. We have attempted to identify those species that are predominate near each blind site which could be important in determining which site you may wish to bid on.

SPECIES	SITES					
	A	B	C	D	E	F
Canada Goose	X*	X*	X*	X	X	
Mallard	X*	X*	X*	X*	X*	X*
Black Duck	X*	X*	X*	X*	X*	X
Pintail	X	X	X*	X*	X*	
Wigeon	X	X	X	X	X	
Wood Duck	X*	X*	X*	X*	X*	X*
Greenwinged Teal	X	X*	X*	X*	X*	X*
Bluewinged Teal	X	X*	X*	X*	X*	X*
Scaup	X*	X	X			
Ringneck		X	X	X	X*	X*
Goldeneye	X			X	X	X
Bufflehead	X	X	X			
Ruddy Duck	X	X	X			
Common Merganser	X	X	X			

* - Predominate Species in Area of Blind Site

X - Species likely to be seen

Solicitation of Bids for the Leasing of Waterfowl
Blind Sites on the Patuxent River

EARLY RESIDENT CANADA GOOSE SEASON

This year we will again offer additional blind sites for the early resident Canada Goose season only (no Teal or other ducks shall be harvested; Canada Goose only). They will be offered on a daily reservation basis at no charge for the period of September 1-15 only. At the end of the resident goose season, these sites will be closed for hunting. The following procedures apply:

- Reservations can be made Tuesday through Saturday, 10 am to 4 pm, at 301-627-6074.
- Blind sites can be reserved beginning Tuesday, August 27 at 10:00 am.
- Up to (4) hunters are permitted at each blind site.
- Reservations require name, phone number, date and site.
- The blind site locations will be staked with a “letter” assignment and a boat is required for access. Please call Greg Kearns at 301-627-6074 for blind location information.
- Launch sites available at Selby’s Landing.
- Hunting on Saturdays, September 7 and 14 is restricted to one-half hour before sunrise to 10:00 AM and from 4:00 PM to one-half hour **after** sunset.
- **NOTE: (No plug required for Resident Geese). Hunting hours for Resident Geese only are one-half hour before sunrise to one-half hour after sunset.**
- The limit for resident goose season is eight (8) geese per person/per day.
- If you need to cancel your reservations, please call as soon as possible to make the site available for others. Call Greg Kearns at 301-627-6074.

The best times to hunt are early morning and late evening. You can expect boater and canoe activity. Please be courteous and cautious.

