

Why Adopt-A- Trail?



As the population of Prince George's County grows, it is important to expand and maintain our beautiful natural areas for all to enjoy. Pedestrian trails offer an opportunity to escape our urban settings and relax in the tranquility of nature. These trails are used for leisure, recreation, transportation, bird watching, exercise, as well as many other uses.

The **Adopt-A-Trail** program is a simple way to show support and commitment to the future success and continued availability of our trail systems. By adopting a section of a trail, a group will:

- ◆ Help the environment by reducing litter.
- ◆ Maintain the trail for future enjoyment.
- ◆ Experience fun in the outdoors.
- ◆ Be actively involved in a community project.
- ◆ Have their efforts recognized with signage.
- ◆ Provide additional eyes & ears for reporting potential hazards & safety concerns.

M-NCPPC Park Ranger Office
14955 Pennsylvania Avenue
Upper Marlboro, MD 20772-4151
301-627-7755
(TTY: 301-699-2544)
www.PGParks.com

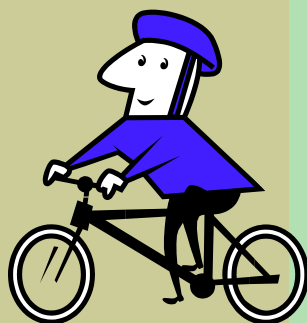
Adopt -A- Trail



live more, play more

General Information

- ◆ Trails are adopted for two years with a minimum of four enhancement activities each year.
- ◆ The adoptable sections are divided into one to two mile areas.
- ◆ Trails adoptions are available on a first come first serve basis.
- ◆ Tools, litter sticks, and trash bags are available upon request.
- ◆ Adoptee groups can keep proceeds from the collection of recyclable materials.
- ◆ The Park Rangers train the group leader, age 18 or older, in clean-up procedures and safety awareness. The leader then instructs group members.



Trail Information

Adopt-A-Trail groups choose from the following Prince George's County trail systems:

The Anacostia Tributary Trail System

- ◆ Features: 19 miles of trails that feature the College Park Airport and Museum, Linson Pool, Lake Artemesia, Adelphi Mill, and a number of community parks.



The Washington Baltimore & Annapolis Recreational Trail WB&A

- ◆ Features: Six miles of paved trails along the old rail line that feature five bridges and two tunnel crossings.

Henson Creek Trail

- ◆ Features: Six miles of paved trails that feature Tucker Road Ice Rink, Henson Creek Golf Course, and a number of community parks.

Getting Started

The first step is to contact the Park Ranger Office at 301-627-7755 to request an Adopt-A-Trail information packet. This packet contains detailed information including:

- ◆ Trail description and locations
- ◆ List of currently available trail sections
- ◆ Safety information
- ◆ An Adopt-A-Trail agreement
- ◆ Map of trails

To become an Adopt-A-Trail group, complete the agreement and return it to the Park Ranger Office at:

- ◆ 14955 Pennsylvania Avenue
Upper Marlboro, MD 20772

- ◆ For more information, Call 301-627-7755 or TTY 301-699-2544
- ◆ Visit the Park Rangers at www.pgparcs.com



Accommodations for individuals with disabilities are available upon request. Please contact the facility two weeks in advance of the program start date. Additionally, the Department of Parks and Recreation requests a 72-hour advance notice for the provision of sign language interpreters.