

Maryland-National Capital Park and Planning Commission



What is M-NCPPC?

Founded in 1927, The Maryland-National Capital Park and Planning Commission (M-NCPPC or “the Commission”) is a nationally recognized leader in land use planning, parks, and recreation achieving countless awards for innovation, stewardship and exemplary vision for enhancing the lives of current and future generations.

The Commission’s governing body is comprised of ten Commissioners, 5 appointed to the Montgomery Planning Board and 5 appointed to the Prince George’s County Planning Board, which have oversight of decisions for the Montgomery and Prince George’s region. The Commission appoints the bi-county officers of the Executive Director, Secretary-Treasurer, and General Counsel.

Why was M-NCPPC Formed?

M-NCPPC was formed to protect natural resources and plan for orderly development in the two suburban counties bordering the District of Columbia. The agency, which is chartered by the State of Maryland, has geographic authority in the Montgomery County and Prince George’s County region, which are the two Maryland counties surrounding Washington, DC.

What is M-NCPPC’s Mission?

For nearly 100 years of service, M-NCPPC has endeavored to improve the quality of life for all of the citizens of the bi-county area it serves and of the communities in which these citizens live, work and raise their families. This mission is embodied in three major program areas which respond to the vision of our founders and are incorporated into our charter. M-NCPPC’s mission is to manage physical growth and plan communities; protect and steward natural, cultural and historic resources; and provide leisure and recreational experiences.

Why is M-NCPPC Important?

The agency improves the well-being of over 2 million residents and countless visitors within this region by:

- Planning for the coordinated and harmonious physical growth and development of the region
- Protecting and stewarding natural, cultural, and historical resources
- Providing an award-winning system of parks
- Creating recreational experiences that enhance the quality of life of all individuals
- Planning great communities that are vibrant, livable, accessible and sustainable



Prince George’s County Planning Board

Darryl Barnes – Chairman, Dorothy F. Bailey,
Manuel R. Geraldo, A. Shuanise Washington



Montgomery County Planning Board

Artie Harris – Chair, Mitra Pedoeem, Shawn Bartley,
James Hedrick, Josh Linden

Growing Strong Communities for a Sustainable Tomorrow

Montgomery Planning is working every day to make Montgomery County a great place to live, work, and thrive. Through innovative planning, thoughtful design, and inclusive community engagement, we set a vision for growth that enhances quality of life—for all of the county's nearly 1.2 million residents.

Here's a few examples of how we're building a brighter future:



Expanding housing options to meet the county's needs

Everyone wants a place to call home that meets their means. We're leading initiatives to expand housing options across the county, with an emphasis on the county's growth corridors. Our work supports housing at all income levels and removes barriers to thoughtful, inclusive development.



Safer multi-modal transportation

Traveling in the county should be safe, efficient, and sustainable for everyone. That's why we're planning for a multi-modal future where residents and visitors have more options for how they get around. Our master plans and countywide functional plans prioritize safety and connectivity — while supporting cleaner transportation alternatives and reducing traffic-related injuries.



Planning for environmental resilience

Montgomery County's natural environment is one of its greatest assets—and we're committed to growing in a way that positions the county well for the challenges of climate change. From expanding the countywide tree canopy and preserving stream valleys to advancing sustainable growth patterns through Thrive Montgomery 2050, we're helping shape a greener, more resilient future. Our environmental planning ensures that new development meets the county's climate goals and protects the environment that we all rely on.

Why it matters

Planning is about people. It's about making sure our county grows in a way that reflects our values and prepares for the needs of future generations. Through community-driven plans, data-driven decisions, and audience-centric community engagement, Montgomery Planning is working toward shaping a brighter tomorrow for our county.



LET'S PLAN IT TOGETHER.

[Montgomeryplanning.org](https://montgomeryplanning.org)

THRIVING COMMUNITIES – now and into the future.

Prince George's County Planning Department plays an active role in shaping nearly 500 square miles and remains committed to preserving, protecting, and managing the county's cultural, historic, and natural resources. In collaboration with residents, we work to promote economic vitality, environmental sustainability, design excellence, and quality development that supports healthy lifestyles in Prince George's County neighborhoods.



The Planning Department has four focus areas that guide the strategic direction of advancing planning throughout Prince George's County – the 4 Ps: People, Partnerships, Projects, and Placemaking.

People are key to providing the technical support of the work programs, including investing in professional development, promotional opportunities (upward mobility) and retention efforts.

- Expansion of the Collegiate Internship Program
- Rebranding of the Undergraduate/Graduate Assistant Program
- Meet & Greets/Brown Bag Series Open to the Public and Staff

Projects reviewed through a more streamlined, development review process while cultivating more effective coordination and supporting communities to become more environmentally, economically and socially sustainable throughout the County. Signature programs include:

- Go Prince George's Master Plan of Transportation (MPOT)
- Enhancements to PGAtlas (GIS) and DARTS (Permitting) Programs
- Farmland Preservation and Activation Study



LEARN MORE ABOUT OUR EFFORTS AT
pgplanning.org



Placemaking includes advancing art in public places, activating plazas and parks from rural to urban areas to enhance cultural and social identity. Countywide Programs include:

- The Art as Placemaking Grant Pilot Program
- Placemaking Around Town (PAT) Program
- Advancing other themes in placemaking including art, parks, farmers markets, and agriculture innovation.

Partnerships include investment in technology and process improvements to meet the Department, County, the public and customer expectations

- Expanding the Planning Assistance for Municipalities and Communities (PAMC) Program
- Expanding the Awarding Winning Program, Neighborhood Planning Academy
- Partnership for Action Learning in Sustainability (PALS)



MontgomeryParks.org

ADVENTURE AHEAD:

Montgomery Parks Invests in Clean Energy and Bold New Recreation Spaces

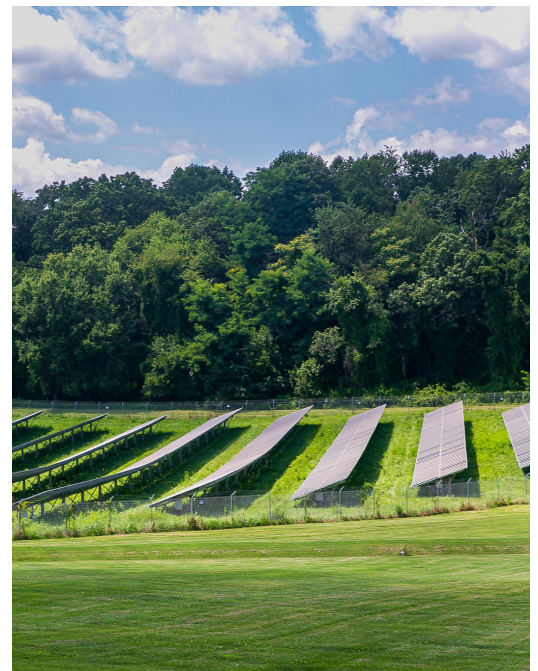
The Wheaton Action Sports Park in Wheaton Regional Park is designed to be an exciting, all-ages destination for adventure, connection, and outdoor fun. It will offer a wide range of amenities—from skate parks and pump tracks to climbing, parkour, fitness zones, and a children’s adventure play area—catering to everyone from beginners to pros. The park will also feature social spaces like seating areas, an event lawn, shade structures, water misters, and ADA improvements to ensure accessibility and comfort for all.

Montgomery Parks secured \$5 million in state funding during the 2025 legislative session to support park and playground improvements across Montgomery County, including:

- Wheaton Regional Park – \$3M to build the Wheaton Action Sports Park, featuring a skatepark, bike skills track, climbing wall, adventure playground, event space, and more.
- New Hampshire Estates Neighborhood Park – \$828K for redevelopment following Purple Line construction, including accessibility upgrades, new playground, picnic shelter, and community connections.
- Centerway Local Park – \$500K for a new skatepark.
- Dalewood Drive Neighborhood Park – \$400K to replace an aging playground.
- Calverton Galway Local Park – \$275K to renovate the playground.

Montgomery Parks is doubling its solar energy production over the next five years, reinforcing its commitment to sustainability, operational efficiency, and the county’s Climate Action Plan. Currently generating 17% of its energy—about 3.4 million kilowatt-hours annually—the agency plans to reach 6.8 million kilowatt-hours through a mix of rooftop, ground-mounted, and parking canopy installations, enough to power 642 homes for a year.

Montgomeryparks.org



Prince George's Parks and Recreation

Find your FUN at pgparks.com

As the largest department within The Maryland-National Capital Park and Planning, Commission, the Department of Parks and Recreation in Prince George's County is a leader in the field with an unprecedented six gold medals for excellence from the National Recreation and Parks Association. The Department provides quality recreation programs, facilities, and services for the County's nearly one million residents and countless visitors. Additionally, the Department operates and maintains more than 27,000 acres of parkland, athletic fields, historic sites, arts venues, community centers, and recreation facilities.

The Department works with communities throughout Prince George's County to meet the recreational needs and interests of patrons of all ages and abilities. Our world-class athletic and aquatics facilities serve as venues for local, regional, national and international competitions while providing health and fitness classes for residents, infants to seniors. Our historic sites preserve and share the story of the county's past from the age of the dinosaurs to the Golden Age of Flight and beyond. Our 160+ miles of pristine trails provide residents with a myriad of outdoor recreational opportunities--from bird watching to mountain biking. The Department recently celebrated 50 years of providing adaptive, therapeutic recreational services to citizens with disabilities.

Throughout the year, residents depend on the Department to provide affordable leisure activities. Our regional parks host large scale cultural celebrations such as Celebrate Africa and the Hispanic Festival while our 43 community centers offer small, hands-on classes ranging from line-dancing to watercolors to karate for all ages. Basketball, baseball, and soccer are just some of the sports the Department coordinates as both leagues and as clinics. The Department's extensive arts program offers concerts featuring almost every genre of music, juried art exhibitions, and live theatrical and dance performances.

FIND YOUR FUN
pgparks.org



SUCCEED WITH US!

The M-NCPPC Department of Human Resources and Management (DHRM), which operates under the direction of the Executive Director, provides agency-wide administrative and human resource management, corporate governance and quality corporate budgeting and forecasting. The Department delivers executive and operational leadership through a set of best management practices, strong fiscal planning, and fair employment and compensation programs.



Fiscal Responsibility

DHRM ensures financial transparency for the agency. Our agency-wide Corporate Budget Office streamlines budget activities across the Commission to strengthen tracking, cost containment, oversight, and increase transparency. For the 40th consecutive year, the Office recently earned the Distinguished Budget Presentation Award from the Government Finance Officers' Association (GFOA) for the annual Budget publications.



Thriving Employees

We offer the gold standard for **employee benefits**. Some of our incredible benefits include outstanding Health Insurance Plans; generous Leave Programs; excellent Pension / Retirement Plan; Compressed Workweek / Flextime; Tuition Assistance; Leadership and Management Opportunities; and Commuter Benefits. Our team has proven to be good stewards of taxpayer money by obtaining savings of almost \$1 million across the next five years for the agency's dental, life insurance and disability plans, and approximately \$3 million over the next three years for the prescription contract.

We offer many **exciting job opportunities**—everything from Athletic Field Technicians to Zamboni Drivers! Some of the vast array of positions we offer include Tree Climbers, Administrative Assistants, Park Rangers, Urban, Transportation, and Park Planners, Aquatics and Fitness Positions, Airport Operations, Café Attendants, Carpenters, Museum Educators, Data Entry Specialists, Plumbers, Electricians, Park Police, Database Administrators, and more. M-NCPPC has contributed to the local economy by employing almost 2,000 people during the past three years.

DHRM has been working closely with our operating departments and the State of Maryland to enhance our **Trades Apprenticeship Program**, which is part of our Career

Development Program. It combines education, on-the-job training, and on-the-job experience for employees to develop journey-level skills in select trades. We look forward to expanding the program not only for adults, but within the school system as well, so that young people in our area may be exposed to some of the amazing career opportunities that the Commission offers.

Additional career development opportunities are available to our employees via the recently-implemented, agency-wide learning management system. In FY24, as an agency, we hosted/offered more than 500 instructor-led training sessions on our LMS platform, and logged more than 30,000 employee training hours, including Department trainings.



Contact us today to apply for one of our many exciting positions!